



**Parish  
Buying**

# Parish Energy

## Energy through Parish Buying – What’s happening?

From September 2025, the old Energy Basket will close for the last time, and be replaced by a new, greener product – **Parish Energy**.

**Parish Energy** will continue to offer great value gas and electricity, but will give you more choice over the type of energy you buy. As well as green electricity for everyone, members can also opt for ordinary brown gas, offset green gas (where trees are planted to offset the carbon load) and full green gas. Longer definitions of these terms are in our **FAQ section**.

### How were the suppliers chosen?

At the end of 2024 we appointed Mitie as our new energy broker. Since then, we have been working with them to conduct a review of energy services to parishes. This has been based on the feedback we’ve had from Parish Buying members, and the Church of England’s Net Zero commitments. The questions we asked potential suppliers were:

- Can you provide 100% green fuel, from a green supply chain?
- Are your costs competitive?
- Do you have robust environmental goals and policies?
- Do you have meaningful ethical and social values?
- Do you offer excellent customer service – more on this overleaf.



### Parish Energy – a summary

#### Key features

**100% green electricity**  
12 Months fixed costs

**Gas - ‘Brown’ gas**  
Variable cost, taking advantage of dips in the market

**Offset green gas**  
Currently circa 5% additional cost compared to ordinary ‘Brown’ gas

**Green gas**  
Currently circa 25% additional cost compared to ordinary ‘Brown’ gas

#### Company

Ecotricity

Corona Energy

Corona Energy

Corona Energy



**THE CHURCH  
OF ENGLAND**

## More about customer service

Having brought Parish Buying customer service in house last Christmas, we now have a better picture of what we're doing well and where we need to improve.

To make sure we minimise any problems in future, we have thoroughly investigated the customer service offering of our chosen energy partners. But we've gone one step further and are pleased to say that Mitie will directly manage all Parish Energy accounts through a dedicated account manager and team.

## What happens next?

If you are one of the several thousand members currently buying your energy through Parish Buying, or if you would like to join us on this journey, please complete the **expression of interest form**. Completing this form does not commit you to a contract at this stage. Once we've processed your no obligation Expression of Interest form, we will send you a Letter of Authority to join the scheme. Your signature on this letter is binding. To complete the form you will need your MPAN (electricity) and/or MPR (gas). You will find these on any current bill. Don't worry about when your current contract ends – we'll factor that in.

## Still have questions?

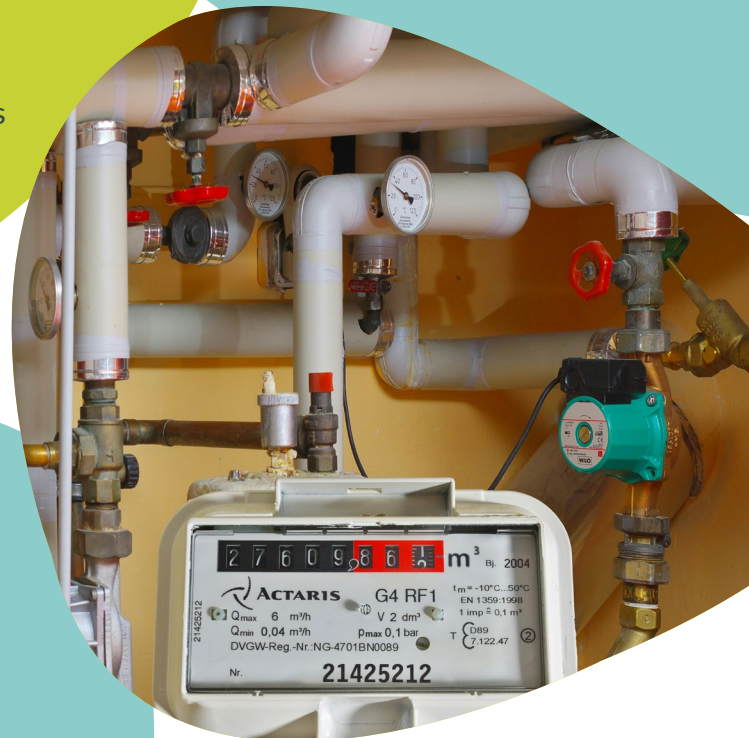
We have updated the **FAQ section** on the Parish Buying website to provide more information about the terms of Parish Energy and standing charges. This may be the quickest way to get the answer to your question as there is likely to be a lot of correspondence at this time.

However if your question isn't fully answered by an FAQ, you can write to [energy.parishbuying@mitie.com](mailto:energy.parishbuying@mitie.com)

## Good news about standing charges

It's been disheartening that we've all seen large increases in standing charges in recent years. But better news is coming ...

The industry element of the standing charges are due to reduce compared to 2024, in some cases by over 50%. So, most members should see a significant reduction in standing charges (and therefore, their overall bill) under the new Parish Energy agreement.



THE CHURCH  
OF ENGLAND



**Parish  
Buying**